

| Qty | Product | Len | Cut Log |
|-----------------------|--------------------------|-----------------------|---------|
| Floor Joist | | | |
| J1 | 17/2x6 #2 Treated | 18'17x(2/0) | |
| J1 | 3/2x6 #2 Treated | 14'3x(2/7) | |
| J1 | 2/2x6 #2 Treated | 12'5x(2/8) | |
| J1 | 3/2x6 #2 Treated | 10'35x(1/10) | |
| J2 | 27/10" Joists | 16'27x(1/16) | |
| J2 | 30/10" Joists | 15'30x(1/15) | |
| J2 | 12/10" Joists | 7'12x(1/7) | |
| Beam | | | |
| B1 | 8/2x8 #2 | 16'8x(1/10) | |
| B1 | 21/2x8 #2 | 10'21x(1/10) | |
| B1 | 4/2x8 #2 | 8'4x(1/8) | |
| B2 | 2/2x8 #2 | 14'2x(2/7) | |
| B3 | 3/2x10 #2 | 16'3x(1/15) | |
| B3 | 2/2x10 #2 | 8'1x(1/8) 1x(1/3 1/4) | |
| Post | | | |
| Pst1 | 8/8x8 | 10'8x(1/10) | |
| Rim | | | |
| Rm1 | 8'1-1/4" x 10" Joist Rim | 16'6/16 | |
| Floor Decking | | | |
| D4 | 2/3/4"x4"x8" OSB T&G | | |
| Stair Stringer | | | |
| S4 | 3/2x12 #2 | 18'3x(1/17) | |
| Deck Decking | | | |
| D4 | 14/5/4x6 #2 Treated | 16'14/16 | |

BASEMENT FOUNDATION

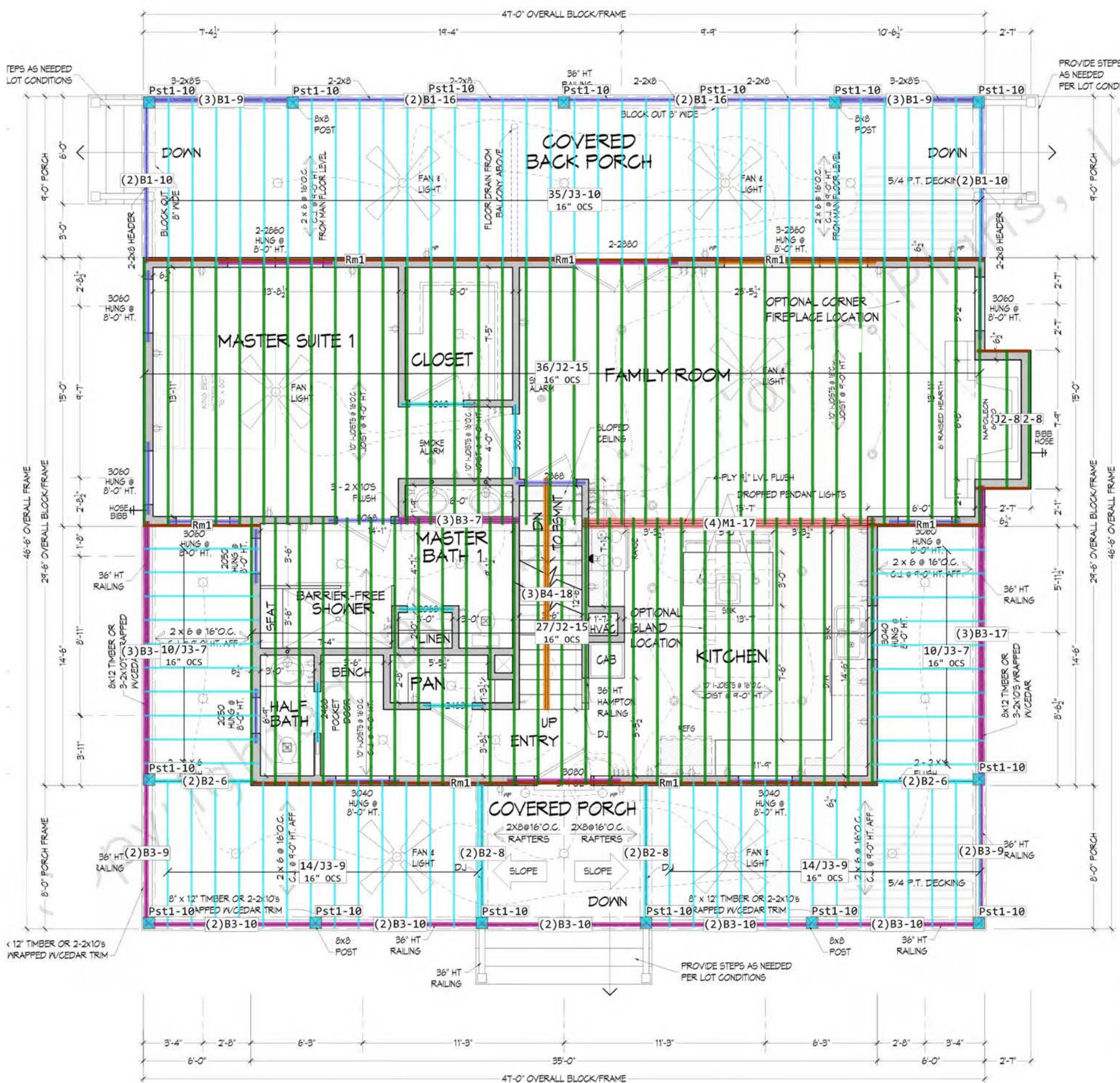
SCALE 1/4" = 1'-0"

1232-1210-2465 Hampton Place

Basement

These placement plans for the products specified were based on the information provided to us. This service is solely intended for product application assurance; it is not intended to circumvent the need for a design professional as determined by the building codes. The designer of record and/or builder/owner are responsible for ensuring that the products are compatible with the overall project.

| Qty | Product | Len | Cal Logic |
|-----------------------|------------------------|----------------------|-----------|
| Floor Joist | | | |
| J2 | 6x10 Joists | 15x(1/15) | |
| J2 | 2x10 Joists | 8x(1/8) | |
| Ceiling Joist | | | |
| J3 | 14x6 #2 | 18x(2/9) | |
| J3 | 10x6 #2 | 14x(2/7) | |
| J3 | 3x6 #2 | 10x(1/10) | |
| Header | | | |
| H11 | 8x8 #2 | 14x(1/4 2/5) 1x(3/4) | |
| H12 | 3x10 #2 | 14x(2/7) | |
| H13 | 4x6 #2 | 14x(1/4 2/5) 1x(3/4) | |
| H14 | 2x12 #2 | 14x(2/10) | |
| Beam | | | |
| B1 | 3x8 #2 | 18x(2/9) | |
| B1 | 4x8 #2 | 16x(1/16) | |
| B1 | 4x8 #2 | 10x(1/10) | |
| B2 | 2x6 #2 | 12x(2/6) | |
| B2 | 4x6 #2 | 8x(1/8) | |
| B3 | 2x10 #2 | 18x(3/17) 2x(2/9) | |
| B3 | 3x10 #2 | 16x(1/15) | |
| B3 | 10x10 #2 | 10x(1/10) | |
| B3 | 3x10 #2 | 8x(1/7) | |
| M1 | 4x1-3/4x8-1/4 LVL | 17x(1/7) | |
| Post | | | |
| Pst1 | 1x8x8 | 10x(1/10) | |
| Rim | | | |
| Rm1 | 7x1-1/4 x 10 Joist Rim | 16x(7/16) | |
| Stair Stringer | | | |
| B4 | 3x12 #2 | 18x(1/18) | |



CO DETECTOR REQUIRED ON EACH LEVEL INCLUDING BASEMENT

SMOKE DETECTOR REQUIRED INSIDE EACH SLEEPING ROOM AND OUTSIDE EACH SLEEPING AREA ON EACH LEVEL

ALL DOORS ARE 8'-0" TALL UNLESS NOTED OTHERWISE

ALL WINDOWS ARE HUNG @ 8'-0" HT UNLESS NOTED OTHERWISE

ALL WALLS ARE 4 1/2" UNLESS NOTED OTHERWISE

ALL EXT. WALLS ARE 6 1/2"

SQUARE FOOTAGE
 1232 HEATED MAIN FLOOR
 1210 HEATED UP
 2442 HEATED TOTAL

1212 BASEMENT
 1253 PORCHES & BALCONY
 2465 TOTAL UNHEATED

4907 TOTAL UNDER ROOF

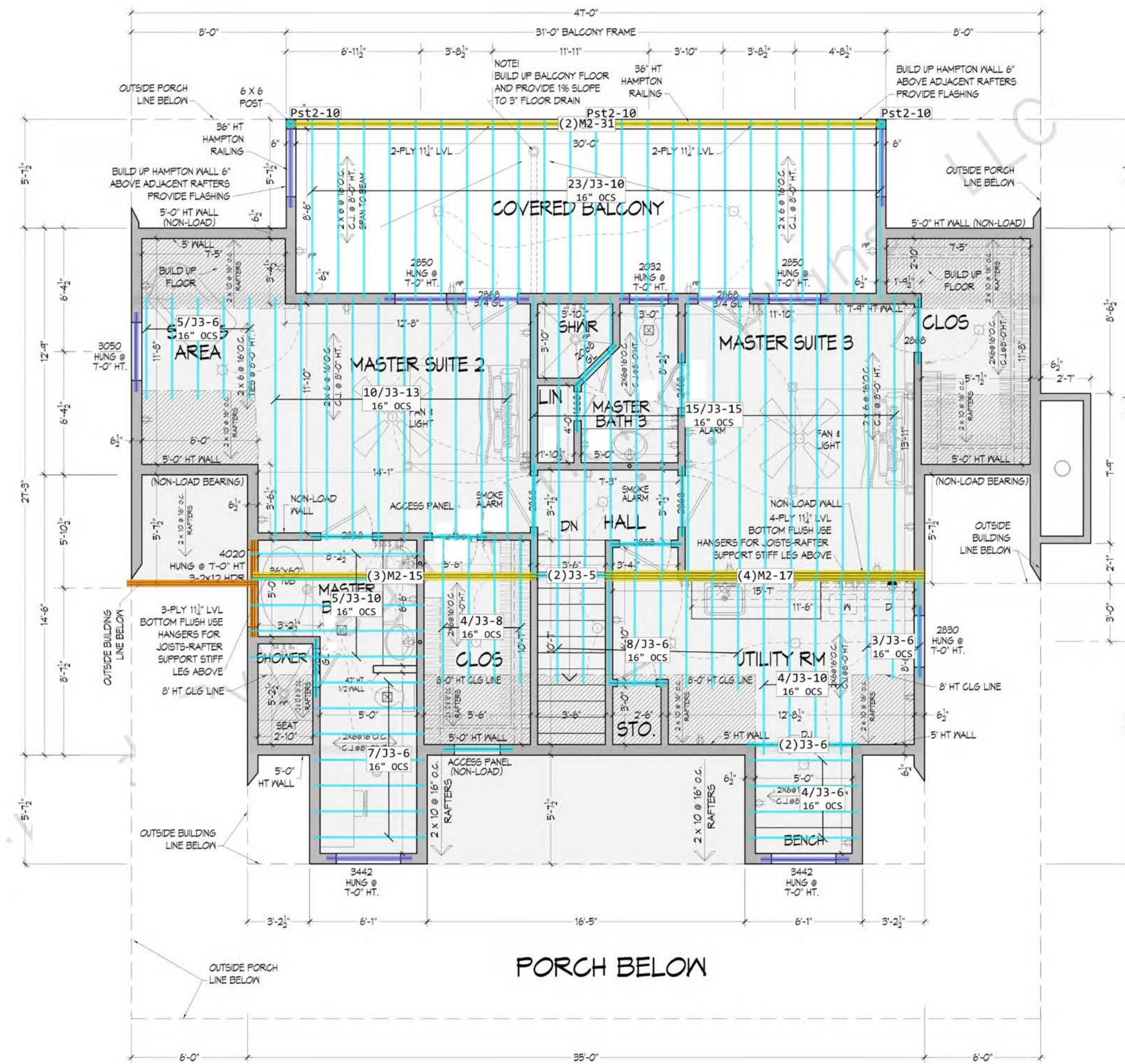
MAIN LEVEL FLOOR PLAN
 SCALE 1/4" = 1'-0"

1232-1210-2465 Hampton Place

FF Framing

These placement plans for the products specified were based on the information provided to us. This service is solely intended for product application assurance; it is not intended to circumvent the need for a design professional as determined by the building codes. The designer of record and the builder/framer are responsible for ensuring that the products are compatible with the overall project.

| Qty | Product | Len | Cut Logic |
|----------------------|---------------------------|---------------------------------|-----------|
| Ceiling Joist | | | |
| J3 | 12x6 #2 | 16'15x(1/15) | |
| J3 | 12x6 #2 | 14'1x(1/8) 10x(1/13) | |
| J3 | 12x6 #2 | 12'14x(2/8) | |
| J3 | 3x2 #2 | 10'1x(2/5) 32x(1/10) | |
| J3 | 3x2 #2 | 8'3x(1/8) | |
| Header | | | |
| Hd1 | 8x2 #2 | 14'5x(1/4) 2/5) 2x(3/4) 1x(1/4) | |
| Hd3 | 8x2 #2 | 14'7x(3/4) 1x(2/3) 1/4) | |
| Hd4 | 3x2 #2 | 14'1x(2/7) 1x(1/6) 1/7) 1x(2/6) | |
| Beam | | | |
| M2 | 2x1-3/4"x11-1/4" LVL 2.0E | 31'2x(1/31) | |
| M2 | 4x1-3/4"x11-1/4" LVL 2.0E | 17'4x(1/17) | |
| M2 | 3x1-3/4"x11-1/4" LVL 2.0E | 15'3x(1/15) | |
| Post | | | |
| Pst2 | 3x6 #2 | 10'3x(1/10) | |
| Floor Decking | | | |
| | 4x3/4"x4x8 OSB T&G | | |



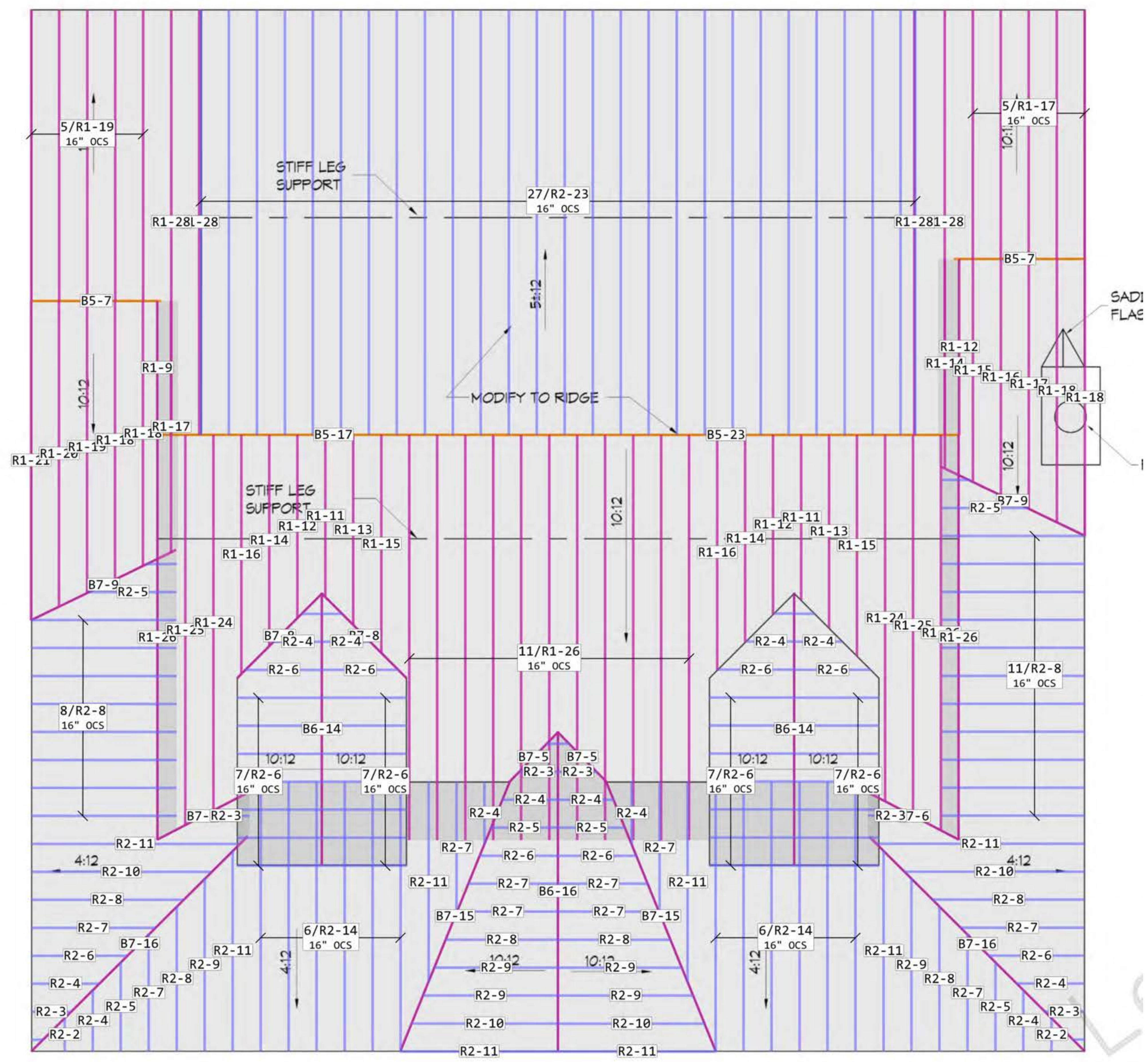
2nd LEVEL FLOOR PLAN

SCALE 1/4" = 1'-0"

1232-1210-2465 Hampton Place

SF Framing

These placement plans for the products specified were based on the information provided to us. This service is solely intended for product application assurance; it is not intended to circumvent the need for a design professional as determined by the building codes. The designer of record and/or builder/framer are responsible for ensuring that the products are compatible with the overall project.



| Tag | Qty | Product | Len | Cut Logic |
|------------------------------|-----|--------------------------|---|-----------|
| Rafter | | | | |
| R1 | 4 | 2x10 #2 | 28'4x(1/28) | |
| R1 | 16 | 2x10 #2 | 26'16x(1/26) | |
| R1 | 2 | 2x10 #2 | 24'2x(1/24) | |
| R1 | 1 | 2x10 #2 | 22'1x(1/22) | |
| R1 | 8 | 2x10 #2 | 20'1x(1/20) 1x(1/8 1/11) 6x(1/10) | |
| R1 | 11 | 2x10 #2 | 18'3x(1/18) 8x(1/17) | |
| R1 | 8 | 2x10 #2 | 16'3x(1/16) 3x(1/15) | |
| R1 | 5 | 2x10 #2 | 14'3x(1/14) 2x(1/13) | |
| R1 | 4 | 2x10 #2 | 12'3x(1/12) 1x(1/11) | |
| R2 | 27 | 2x8 #2 | 24'27x(1/24) | |
| R2 | 3 | 2x8 #2 | 18'3x(2/9) | |
| R2 | 16 | 2x8 #2 | 14'4x(2/7) 12x(1/14) | |
| R2 | 21 | 2x8 #2 | 12'13x(2/6) 8x(1/11) | |
| R2 | 4 | 2x8 #2 | 10'4x(1/10) | |
| R2 | 49 | 2x8 #2 | 8'2x(1/1 1/7) 10x(1/2 1/8) 6x(1/3 1/5) 6x(2/4) 25x(1/8) | |
| Roof Ridge | | | | |
| B5 | 1 | 2x12 #2 | 24'1x(1/24) | |
| B5 | 1 | 2x12 #2 | 18'1x(1/17) | |
| B5 | 1 | 2x12 #2 | 14'1x(2/7) | |
| B6 | 1 | 2x10 #2 | 16'1x(1/16) | |
| B6 | 2 | 2x10 #2 | 14'2x(1/14) | |
| Roof Hip & Valley | | | | |
| B7 | 1 | 2x10 #2 | 18'1x(2/9) | |
| B7 | 4 | 2x10 #2 | 16'2x(1/16) 2x(1/15) | |
| B7 | 1 | 2x10 #2 | 12'1x(2/6) | |
| B7 | 1 | 2x10 #2 | 10'1x(2/5) | |
| B7 | 2 | 2x10 #2 | 8'2x(1/8) | |
| Roof Decking | | | | |
| | | 1147/16"x4"x8" OSB | | |
| Roof Shingles | | | | |
| | | 37/Square(s) of Shingles | | |

ROOF PLAN
SCALE: 1/8" = 1'-0"

1232-1210-2465 Hampton Place

Roof

These placement plans for the products specified were based on the information provided to us. This service is solely intended for product application assurance. It is not intended to circumvent the need for a design professional as determined by the building codes. The design of these and any other structural members are compatible with the overall project.

Tracking# -Tracking- - Main House
 Project SAMPLE HOUSE PLAN
 Updated
 Printed

Condensed List
 Client
 Architectural Date
 Structural Date

PO#

n/a

Project SF

| Line # | Quantity | Product Description | Product Family | UOP | Amount | Price | Per | Total |
|--------------------------------|----------|----------------------------|----------------|-----|--------|-------|-----|--------|
| Basement Wall Materials | | | | | | | | |
| 1 | 8 | 8x8x10' | Lumber | EA | 8 | | | \$0.00 |
| 2 | 3 | 2x12x18' #2 | Lumber | EA | 3 | | | \$0.00 |
| 3 | 3 | 2x10x16' #2 | Lumber | EA | 3 | | | \$0.00 |
| 4 | 2 | 2x10x8' #2 | Lumber | EA | 2 | | | \$0.00 |
| 5 | 8 | 2x8x16' #2 | Lumber | EA | 8 | | | \$0.00 |
| 6 | 21 | 2x8x10' #2 | Lumber | EA | 21 | | | \$0.00 |
| 7 | 4 | 2x8x8' #2 | Lumber | EA | 4 | | | \$0.00 |
| 8 | 2 | 2x6x14' #2 | Lumber | EA | 2 | | | \$0.00 |
| 9 | 17 | 2x6x18' #2 Treated | Lumber | EA | 17 | | | \$0.00 |
| 10 | 11 | 2x6x16' #2 Treated | Lumber | EA | 11 | | | \$0.00 |
| 11 | 5 | 2x6x14' #2 Treated | Lumber | EA | 5 | | | \$0.00 |
| 12 | 5 | 2x6x12' #2 Treated | Lumber | EA | 5 | | | \$0.00 |
| 13 | 35 | 2x6x10' #2 Treated | Lumber | EA | 35 | | | \$0.00 |
| 14 | 10 | 2x4x16' #2 | Lumber | EA | 10 | | | \$0.00 |
| 15 | 67 | 2x4x104-5/8" #2 | Lumber | EA | 67 | | | \$0.00 |
| 16 | 4 | 2x4x16' #2 Treated | Lumber | EA | 4 | | | \$0.00 |
| 17 | 147 | 5/4x6x16' #2 Treated | Lumber | EA | 147 | | | \$0.00 |
| 18 | 27 | 10"x16' I-Joists | EWP | EA | 27 | | | \$0.00 |
| 19 | 30 | 10"x15' I-Joists | EWP | EA | 30 | | | \$0.00 |
| 20 | 12 | 10"x7' I-Joists | EWP | EA | 12 | | | \$0.00 |
| 21 | 6 | 1-1/4" x 10"x16' Joist Rim | EWP | EA | 6 | | | \$0.00 |
| 22 | 1 | 12" x 300' Termite Shield | Miscellaneous | EA | 1 | | | \$0.00 |
| 23 | 2 | 6" x 100' Sill Seal | Miscellaneous | EA | 2 | | | \$0.00 |
| 24 | 42 | 3/4"x4'x8' OSB T&G | Panel | EA | 42 | | | \$0.00 |
| FF Wall Materials | | | | | | | | |
| 25 | 36 | 2x6x16' #2 | Lumber | EA | 36 | | | \$0.00 |
| 26 | 73 | 2x6x116-5/8" #2 | Lumber | EA | 73 | | | \$0.00 |
| 27 | 105 | 2x6x104-5/8" #2 | Lumber | EA | 105 | | | \$0.00 |
| 28 | 111 | 2x4x16' #2 | Lumber | EA | 111 | | | \$0.00 |
| 29 | 135 | 2x4x104-5/8" #2 | Lumber | EA | 135 | | | \$0.00 |
| 30 | 19 | 7/16"x4'x10' OSB | Panel | EA | 19 | | | \$0.00 |
| 31 | 27 | 7/16"x4'x9' OSB | Panel | EA | 27 | | | \$0.00 |
| FF Beams Materials | | | | | | | | |
| 32 | 15 | 8x8x10' | Lumber | EA | 15 | | | \$0.00 |
| 33 | 3 | 2x12x18' #2 | Lumber | EA | 3 | | | \$0.00 |
| 34 | 2 | 2x12x14' #2 | Lumber | EA | 2 | | | \$0.00 |
| 35 | 5 | 2x10x18' #2 | Lumber | EA | 5 | | | \$0.00 |
| 36 | 3 | 2x10x16' #2 | Lumber | EA | 3 | | | \$0.00 |
| 37 | 3 | 2x10x14' #2 | Lumber | EA | 3 | | | \$0.00 |
| 38 | 10 | 2x10x10' #2 | Lumber | EA | 10 | | | \$0.00 |
| 39 | 3 | 2x10x8' #2 | Lumber | EA | 3 | | | \$0.00 |
| 40 | 3 | 2x8x18' #2 | Lumber | EA | 3 | | | \$0.00 |
| 41 | 4 | 2x8x16' #2 | Lumber | EA | 4 | | | \$0.00 |
| 42 | 9 | 2x8x14' #2 | Lumber | EA | 9 | | | \$0.00 |
| 43 | 4 | 2x8x10' #2 | Lumber | EA | 4 | | | \$0.00 |
| 44 | 4 | 2x6x14' #2 | Lumber | EA | 4 | | | \$0.00 |
| 45 | 2 | 2x6x12' #2 | Lumber | EA | 2 | | | \$0.00 |
| 46 | 4 | 2x6x8' #2 | Lumber | EA | 4 | | | \$0.00 |
| 47 | 4 | 1-3/4"x9-1/4"x17' LVL | EWP | EA | 4 | | | \$0.00 |
| 48 | 5 | 7/16"x4'x8' OSB | Panel | EA | 5 | | | \$0.00 |
| SF Deck Materials | | | | | | | | |
| 49 | 14 | 2x6x18' #2 | Lumber | EA | 14 | | | \$0.00 |
| 50 | 10 | 2x6x14' #2 | Lumber | EA | 10 | | | \$0.00 |

Tracking# -Tracking- - Main House
 Project SAMPLE HOUSE PLAN
 Updated
 Printed

Condensed List
 Client
 Architectural Date
 Structural Date

PO#

n/a

Project SF

| Line # | Quantity | Product Description | Product Family | UOP | Amount | Price | Per | Total |
|--------|----------|----------------------------|----------------|-----|--------|-------|-----|--------|
| 51 | 35 | 2x6x10' #2 | Lumber | EA | 35 | | | \$0.00 |
| 52 | 63 | 10"x15' I-Joists | EWP | EA | 63 | | | \$0.00 |
| 53 | 2 | 10"x8' I-Joists | EWP | EA | 2 | | | \$0.00 |
| 54 | 7 | 1-1/4" x 10"x16' Joist Rim | EWP | EA | 7 | | | \$0.00 |
| 55 | 43 | 3/4"x4"x8' OSB T&G | Panel | EA | 43 | | | \$0.00 |

SF Wall Materials

| | | | | | | | | |
|----|-----|-----------------|--------|----|-----|--|--|--------|
| 56 | 44 | 2x6x16' #2 | Lumber | EA | 44 | | | \$0.00 |
| 57 | 228 | 2x6x92-5/8" #2 | Lumber | EA | 228 | | | \$0.00 |
| 58 | 32 | 2x4x16' #2 | Lumber | EA | 32 | | | \$0.00 |
| 59 | 167 | 2x4x92-5/8" #2 | Lumber | EA | 167 | | | \$0.00 |
| 60 | 50 | 7/16"x4"x8' OSB | Panel | EA | 50 | | | \$0.00 |

SF Beams Materials

| | | | | | | | | |
|----|---|-----------------------------|--------|----|---|--|--|--------|
| 61 | 3 | 6x6x10' #2 | Lumber | EA | 3 | | | \$0.00 |
| 62 | 3 | 2x12x14' #2 | Lumber | EA | 3 | | | \$0.00 |
| 63 | 8 | 2x8x14' #2 | Lumber | EA | 8 | | | \$0.00 |
| 64 | 8 | 2x6x14' #2 | Lumber | EA | 8 | | | \$0.00 |
| 65 | 2 | 1-3/4"x11-1/4"x31' LVL 2.0E | EWP | EA | 2 | | | \$0.00 |
| 66 | 4 | 1-3/4"x11-1/4"x17' LVL 2.0E | EWP | EA | 4 | | | \$0.00 |
| 67 | 3 | 1-3/4"x11-1/4"x15' LVL 2.0E | EWP | EA | 3 | | | \$0.00 |
| 68 | 3 | 7/16"x4"x8' OSB | Panel | EA | 3 | | | \$0.00 |

SF Ceiling Joist Materials

| | | | | | | | | |
|----|----|------------|--------|----|----|--|--|--------|
| 69 | 15 | 2x6x16' #2 | Lumber | EA | 15 | | | \$0.00 |
| 70 | 11 | 2x6x14' #2 | Lumber | EA | 11 | | | \$0.00 |
| 71 | 14 | 2x6x12' #2 | Lumber | EA | 14 | | | \$0.00 |
| 72 | 33 | 2x6x10' #2 | Lumber | EA | 33 | | | \$0.00 |
| 73 | 3 | 2x6x8' #2 | Lumber | EA | 3 | | | \$0.00 |

Roof Materials

| | | | | | | | | |
|----|-----|-----------------------------|---------|----|-----|--|--|--------|
| 74 | 1 | 2x12x24' #2 | Lumber | EA | 1 | | | \$0.00 |
| 75 | 1 | 2x12x18' #2 | Lumber | EA | 1 | | | \$0.00 |
| 76 | 1 | 2x12x14' #2 | Lumber | EA | 1 | | | \$0.00 |
| 77 | 4 | 2x10x28' #2 | Lumber | EA | 4 | | | \$0.00 |
| 78 | 16 | 2x10x26' #2 | Lumber | EA | 16 | | | \$0.00 |
| 79 | 2 | 2x10x24' #2 | Lumber | EA | 2 | | | \$0.00 |
| 80 | 1 | 2x10x22' #2 | Lumber | EA | 1 | | | \$0.00 |
| 81 | 8 | 2x10x20' #2 | Lumber | EA | 8 | | | \$0.00 |
| 82 | 12 | 2x10x18' #2 | Lumber | EA | 12 | | | \$0.00 |
| 83 | 11 | 2x10x16' #2 | Lumber | EA | 11 | | | \$0.00 |
| 84 | 7 | 2x10x14' #2 | Lumber | EA | 7 | | | \$0.00 |
| 85 | 5 | 2x10x12' #2 | Lumber | EA | 5 | | | \$0.00 |
| 86 | 1 | 2x10x10' #2 | Lumber | EA | 1 | | | \$0.00 |
| 87 | 2 | 2x10x8' #2 | Lumber | EA | 2 | | | \$0.00 |
| 88 | 27 | 2x8x24' #2 | Lumber | EA | 27 | | | \$0.00 |
| 89 | 3 | 2x8x18' #2 | Lumber | EA | 3 | | | \$0.00 |
| 90 | 16 | 2x8x14' #2 | Lumber | EA | 16 | | | \$0.00 |
| 91 | 21 | 2x8x12' #2 | Lumber | EA | 21 | | | \$0.00 |
| 92 | 4 | 2x8x10' #2 | Lumber | EA | 4 | | | \$0.00 |
| 93 | 49 | 2x8x8' #2 | Lumber | EA | 49 | | | \$0.00 |
| 94 | 1 | 2x4x12' #2 | Lumber | EA | 1 | | | \$0.00 |
| 95 | 26 | 2x4x8' #2 | Lumber | EA | 26 | | | \$0.00 |
| 96 | 114 | 7/16"x4"x8' OSB | Panel | EA | 114 | | | \$0.00 |
| 97 | 37 | Square(s) of Shingles | Roofing | SQ | 37 | | | \$0.00 |
| 98 | 19 | Roll 30# Felt (2 sq.) | Roofing | EA | 19 | | | \$0.00 |
| 99 | 2 | Rolls of Ice/Water Membrane | Roofing | EA | 2 | | | \$0.00 |

| Tracking# Project Updated Printed | -Tracking - Main House SAMPLE HOUSE PLAN | Condensed List Client | Architectural Date 4/13/2021 | PO# | Structural Date n/a | Project SF | | | |
|--|---|--|---------------------------------|-----|------------------------|------------|-----|--------|--|
| Line # | Quantity | Product Description | Product Family | UOP | Amount | Price | Per | Total | |
| Exterior Trim Materials | | | | | | | | | |
| 100 | 69 | 2x4x16' #2 | Lumber | EA | 69 | | | \$0.00 | |
| 101 | 28 | 1x12x16' Western Red Cedar | Lumber | EA | 28 | | | \$0.00 | |
| 102 | 15 | 1x10x16' | Lumber | EA | 15 | | | \$0.00 | |
| 103 | 1 | 1x8x20' | Lumber | EA | 1 | | | \$0.00 | |
| 104 | 4 | 1x8x18' | Lumber | EA | 4 | | | \$0.00 | |
| 105 | 45 | 1x8x16' | Lumber | EA | 45 | | | \$0.00 | |
| 106 | 1 | 1x8x14' | Lumber | EA | 1 | | | \$0.00 | |
| 107 | 2 | 1x8x12' | Lumber | EA | 2 | | | \$0.00 | |
| 108 | 3 | 1x8x10' | Lumber | EA | 3 | | | \$0.00 | |
| 109 | 4 | 1x8x8' | Lumber | EA | 4 | | | \$0.00 | |
| 110 | 14 | 1x8x16' Western Red Cedar | Lumber | EA | 14 | | | \$0.00 | |
| 111 | 61 | 1x4x16' | Lumber | EA | 61 | | | \$0.00 | |
| 112 | 56 | 1x2x16' | Lumber | EA | 56 | | | \$0.00 | |
| 113 | 3 | 9'x150' House Wrap | Miscellaneous | EA | 3 | | | \$0.00 | |
| 114 | 1,059 | SF of Board Siding | Siding | SF | 1,059 | | | \$0.00 | |
| 115 | 695 | 48" x 15.875" HardieShingle Staggered Edge Panel | Siding | EA | 695 | | | \$0.00 | |
| 116 | 26 | 1/2"x4"x8' CDX | Panel | EA | 26 | | | \$0.00 | |
| Drywall Materials | | | | | | | | | |
| 117 | 18 | 1/2"x4'x10' Gypsum | Panel | EA | 18 | | | \$0.00 | |
| 118 | 121 | 1/2"x4'x9' Gypsum | Panel | EA | 121 | | | \$0.00 | |
| 119 | 141 | 1/2"x4'x8' Gypsum | Panel | EA | 141 | | | \$0.00 | |
| 120 | 75 | 1/2"x4'x8' Gypsum | Panel | EA | 75 | | | \$0.00 | |
| Insulation Materials | | | | | | | | | |
| 121 | 2,887 | SF of R-13 Batt Insulation 16" Bay | Insulation | SF | 2,887 | | | \$0.00 | |
| 122 | 2,689 | SF of R-21 Batt Insulation 16" Bay | Insulation | SF | 2,689 | | | \$0.00 | |
| 123 | 1,236 | SF of R-30 Batt Insulation 16" Bay | Insulation | SF | 1,236 | | | \$0.00 | |
| Hardware Materials | | | | | | | | | |
| 124 | 51 | Construction Adhesive (1 Qt.) | Miscellaneous | EA | 51 | | | \$0.00 | |
| Doors Materials | | | | | | | | | |
| 125 | 1 | Exterior 2/8 x 6/8 LH Inswing | Doors | EA | 1 | | | \$0.00 | |
| 126 | 1 | Exterior 2/8 x 6/8 RH Inswing | Doors | EA | 1 | | | \$0.00 | |
| 127 | 1 | Exterior 3/0 x 6/8 LH Inswing | Doors | EA | 1 | | | \$0.00 | |
| 128 | 1 | Exterior French 5/4 x 8/0 Inswing | Doors | EA | 1 | | | \$0.00 | |
| 129 | 1 | Interior 1/6 x 6/8 RH Swing | Doors | EA | 1 | | | \$0.00 | |
| 130 | 1 | Interior 2/0 x 6/8 LH Swing | Doors | EA | 1 | | | \$0.00 | |
| 131 | 1 | Interior 2/0 x 6/8 RH Swing | Doors | EA | 1 | | | \$0.00 | |
| 132 | 3 | Interior 2/4 x 6/8 RH Swing | Doors | EA | 3 | | | \$0.00 | |
| 133 | 4 | Interior 2/8 x 6/8 LH Swing | Doors | EA | 4 | | | \$0.00 | |
| 134 | 3 | Interior 2/8 x 6/8 RH Swing | Doors | EA | 3 | | | \$0.00 | |
| 135 | 3 | Interior 3/0 x 6/8 LH Swing | Doors | EA | 3 | | | \$0.00 | |
| 136 | 2 | Interior 3/0 x 6/8 RH Swing | Doors | EA | 2 | | | \$0.00 | |
| 137 | 1 | Pocket 2/4 x 6/8 | Doors | EA | 1 | | | \$0.00 | |
| Windows Materials | | | | | | | | | |
| 138 | 1 | Window (2) 2/8 x 6/0 | Windows | EA | 1 | | | \$0.00 | |
| 139 | 1 | Window (3) 2/8 x 6/0 | Windows | EA | 1 | | | \$0.00 | |
| 140 | 1 | Window 2/0 x 3/2 | Windows | EA | 1 | | | \$0.00 | |
| 141 | 2 | Window 2/0 x 5/0 | Windows | EA | 2 | | | \$0.00 | |
| 142 | 1 | Window 2/8 x 3/0 | Windows | EA | 1 | | | \$0.00 | |

Tracking# -Tracking- - Main House
Project SAMPLE HOUSE PLAN
Updated
Printed

Condensed List
Client
Architectural Date
Structural Date

PO#

n/a

Project SF

| Line # | Quantity | Product Description | Product Family | UOP | Amount | Price | Per | Total |
|--------|----------|---------------------|----------------|-----|--------|-------|-------|--------|
| 143 | 2 | Window 2/8 x 5/0 | Windows | EA | 2 | | | \$0.00 |
| 144 | 3 | Window 3/0 x 4/0 | Windows | EA | 3 | | | \$0.00 |
| 145 | 1 | Window 3/0 x 5/0 | Windows | EA | 1 | | | \$0.00 |
| 146 | 5 | Window 3/0 x 6/0 | Windows | EA | 5 | | | \$0.00 |
| 147 | 2 | Window 3/4 x 4/2 | Windows | EA | 2 | | | \$0.00 |
| 148 | 1 | Window 4/0 x 2/0 | Windows | EA | 1 | | | \$0.00 |
| 149 | 2 | Window 1/0 x 8/0 | Windows | EA | 2 | | | \$0.00 |
| | | | | | | | Total | \$0.00 |

Tracking # -Tracking- - Main House

Condensed List

Client / PO#

Report Time

Estimator Jason E

Arch. Date

Struct. Date n/a

| Line # | Quantity | Product Description | Product Family |
|--------------------------------|----------|----------------------------|----------------|
| Basement Wall Materials | | | |
| 1 | 8 | 8x8x10' | Lumber |
| 2 | 3 | 2x12x18' #2 | Lumber |
| 3 | 3 | 2x10x16' #2 | Lumber |
| 4 | 2 | 2x10x8' #2 | Lumber |
| 5 | 8 | 2x8x16' #2 | Lumber |
| 6 | 21 | 2x8x10' #2 | Lumber |
| 7 | 4 | 2x8x8' #2 | Lumber |
| 8 | 2 | 2x6x14' #2 | Lumber |
| 9 | 17 | 2x6x18' #2 Treated | Lumber |
| 10 | 11 | 2x6x16' #2 Treated | Lumber |
| 11 | 5 | 2x6x14' #2 Treated | Lumber |
| 12 | 5 | 2x6x12' #2 Treated | Lumber |
| 13 | 35 | 2x6x10' #2 Treated | Lumber |
| 14 | 10 | 2x4x16' #2 | Lumber |
| 15 | 67 | 2x4x104-5/8" #2 | Lumber |
| 16 | 4 | 2x4x16' #2 Treated | Lumber |
| 17 | 147 | 5/4x6x16' #2 Treated | Lumber |
| 18 | 27 | 10"x16' I-Joists | EWP |
| 19 | 30 | 10"x15' I-Joists | EWP |
| 20 | 12 | 10"x7' I-Joists | EWP |
| 21 | 6 | 1-1/4" x 10"x16' Joist Rim | EWP |
| 22 | 1 | 12" x 300' Termite Shield | Miscellaneous |
| 23 | 2 | 6" x 100' Sill Seal | Miscellaneous |
| 24 | 42 | 3/4"x4'x8' OSB T&G | Panel |
| FF Wall Materials | | | |
| 25 | 36 | 2x6x16' #2 | Lumber |
| 26 | 73 | 2x6x116-5/8" #2 | Lumber |
| 27 | 105 | 2x6x104-5/8" #2 | Lumber |
| 28 | 111 | 2x4x16' #2 | Lumber |
| 29 | 135 | 2x4x104-5/8" #2 | Lumber |
| 30 | 19 | 7/16"x4'x10' OSB | Panel |
| 31 | 27 | 7/16"x4'x9' OSB | Panel |
| FF Beams Materials | | | |
| 32 | 15 | 8x8x10' | Lumber |
| 33 | 3 | 2x12x18' #2 | Lumber |
| 34 | 2 | 2x12x14' #2 | Lumber |
| 35 | 5 | 2x10x18' #2 | Lumber |
| 36 | 3 | 2x10x16' #2 | Lumber |
| 37 | 3 | 2x10x14' #2 | Lumber |
| 38 | 10 | 2x10x10' #2 | Lumber |
| 39 | 3 | 2x10x8' #2 | Lumber |
| 40 | 3 | 2x8x18' #2 | Lumber |
| 41 | 4 | 2x8x16' #2 | Lumber |
| 42 | 9 | 2x8x14' #2 | Lumber |
| 43 | 4 | 2x8x10' #2 | Lumber |
| 44 | 4 | 2x6x14' #2 | Lumber |
| 45 | 2 | 2x6x12' #2 | Lumber |
| 46 | 4 | 2x6x8' #2 | Lumber |
| 47 | 4 | 1-3/4"x9-1/4"x17' LVL | EWP |
| 48 | 5 | 7/16"x4'x8' OSB | Panel |

Tracking # -Tracking- - Main House

Condensed List

Client / PO#

Report Time

Estimator Jason E

Arch. Date

Struct. Date n/a

| Line # | Quantity | Product Description | Product Family |
|-----------------------------------|----------|-----------------------------|----------------|
| SF Deck Materials | | | |
| 49 | 14 | 2x6x18' #2 | Lumber |
| 50 | 10 | 2x6x14' #2 | Lumber |
| 51 | 35 | 2x6x10' #2 | Lumber |
| 52 | 63 | 10"x15' I-Joists | EWP |
| 53 | 2 | 10"x8' I-Joists | EWP |
| 54 | 7 | 1-1/4" x 10"x16' Joist Rim | EWP |
| 55 | 43 | 3/4"x4"x8' OSB T&G | Panel |
| SF Wall Materials | | | |
| 56 | 44 | 2x6x16' #2 | Lumber |
| 57 | 228 | 2x6x92-5/8" #2 | Lumber |
| 58 | 32 | 2x4x16' #2 | Lumber |
| 59 | 167 | 2x4x92-5/8" #2 | Lumber |
| 60 | 50 | 7/16"x4"x8' OSB | Panel |
| SF Beams Materials | | | |
| 61 | 3 | 6x6x10' #2 | Lumber |
| 62 | 3 | 2x12x14' #2 | Lumber |
| 63 | 8 | 2x8x14' #2 | Lumber |
| 64 | 8 | 2x6x14' #2 | Lumber |
| 65 | 2 | 1-3/4"x11-1/4"x31' LVL 2.0E | EWP |
| 66 | 4 | 1-3/4"x11-1/4"x17' LVL 2.0E | EWP |
| 67 | 3 | 1-3/4"x11-1/4"x15' LVL 2.0E | EWP |
| 68 | 3 | 7/16"x4"x8' OSB | Panel |
| SF Ceiling Joist Materials | | | |
| 69 | 15 | 2x6x16' #2 | Lumber |
| 70 | 11 | 2x6x14' #2 | Lumber |
| 71 | 14 | 2x6x12' #2 | Lumber |
| 72 | 33 | 2x6x10' #2 | Lumber |
| 73 | 3 | 2x6x8' #2 | Lumber |
| Roof Materials | | | |
| 74 | 1 | 2x12x24' #2 | Lumber |
| 75 | 1 | 2x12x18' #2 | Lumber |
| 76 | 1 | 2x12x14' #2 | Lumber |
| 77 | 4 | 2x10x28' #2 | Lumber |
| 78 | 16 | 2x10x26' #2 | Lumber |
| 79 | 2 | 2x10x24' #2 | Lumber |
| 80 | 1 | 2x10x22' #2 | Lumber |
| 81 | 8 | 2x10x20' #2 | Lumber |
| 82 | 12 | 2x10x18' #2 | Lumber |
| 83 | 11 | 2x10x16' #2 | Lumber |
| 84 | 7 | 2x10x14' #2 | Lumber |
| 85 | 5 | 2x10x12' #2 | Lumber |
| 86 | 1 | 2x10x10' #2 | Lumber |
| 87 | 2 | 2x10x8' #2 | Lumber |
| 88 | 27 | 2x8x24' #2 | Lumber |
| 89 | 3 | 2x8x18' #2 | Lumber |
| 90 | 16 | 2x8x14' #2 | Lumber |
| 91 | 21 | 2x8x12' #2 | Lumber |
| 92 | 4 | 2x8x10' #2 | Lumber |

Tracking # -Tracking- - Main House

Condensed List

Client / PO#

Report Time

Estimator Jason E

Arch. Date

Struct. Date n/a

| Line # | Quantity | Product Description | Product Family |
|--------------------------------|----------|--|----------------|
| 93 | 49 | 2x8x8' #2 | Lumber |
| 94 | 1 | 2x4x12' #2 | Lumber |
| 95 | 26 | 2x4x8' #2 | Lumber |
| 96 | 114 | 7/16"x4'x8' OSB | Panel |
| 97 | 37 | Square(s) of Shingles | Roofing |
| 98 | 19 | Roll 30# Felt (2 sq.) | Roofing |
| 99 | 129 | LF of Ice/Water Membrane | Roofing |
| Exterior Trim Materials | | | |
| 100 | 69 | 2x4x16' #2 | Lumber |
| 101 | 28 | 1x12x16' Western Red Cedar | Lumber |
| 102 | 15 | 1x10x16' | Lumber |
| 103 | 1 | 1x8x20' | Lumber |
| 104 | 4 | 1x8x18' | Lumber |
| 105 | 45 | 1x8x16' | Lumber |
| 106 | 1 | 1x8x14' | Lumber |
| 107 | 2 | 1x8x12' | Lumber |
| 108 | 3 | 1x8x10' | Lumber |
| 109 | 4 | 1x8x8' | Lumber |
| 110 | 14 | 1x8x16' Western Red Cedar | Lumber |
| 111 | 61 | 1x4x16' | Lumber |
| 112 | 56 | 1x2x16' | Lumber |
| 113 | 3 | 9'x150' House Wrap | Miscellaneous |
| 114 | 1,059 | SF of Board Siding | Siding |
| 115 | 695 | 48" x 15.875" HardieShingle Staggered Edge Panel | Siding |
| 116 | 26 | 1/2"x4'x8' CDX | Panel |
| Drywall Materials | | | |
| 117 | 18 | 1/2"x4'x10' Gypsum | Panel |
| 118 | 121 | 1/2"x4'x9' Gypsum | Panel |
| 119 | 141 | 1/2"x4'x8' Gypsum | Panel |
| 120 | 75 | 1/2"x4'x8' Gypsum | Panel |
| Insulation Materials | | | |
| 121 | 2,887 | SF of R-13 Batt Insulation 16" Bay | Insulation |
| 122 | 2,689 | SF of R-21 Batt Insulation 16" Bay | Insulation |
| 123 | 1,236 | SF of R-30 Batt Insulation 16" Bay | Insulation |
| Hardware Materials | | | |
| 124 | 51 | Construction Adhesive (1 Qt.) | Miscellaneous |
| Doors Materials | | | |
| 125 | 1 | Exterior 2/8 x 6/8 LH Inswing | Doors |
| 126 | 1 | Exterior 2/8 x 6/8 RH Inswing | Doors |
| 127 | 1 | Exterior 3/0 x 6/8 LH Inswing | Doors |
| 128 | 1 | Exterior French 5/4 x 8/0 Inswing | Doors |
| 129 | 1 | Interior 1/6 x 6/8 RH Swing | Doors |
| 130 | 1 | Interior 2/0 x 6/8 LH Swing | Doors |
| 131 | 1 | Interior 2/0 x 6/8 RH Swing | Doors |
| 132 | 3 | Interior 2/4 x 6/8 RH Swing | Doors |
| 133 | 4 | Interior 2/8 x 6/8 LH Swing | Doors |
| 134 | 3 | Interior 2/8 x 6/8 RH Swing | Doors |
| 135 | 3 | Interior 3/0 x 6/8 LH Swing | Doors |
| 136 | 2 | Interior 3/0 x 6/8 RH Swing | Doors |

1232-1210-2465 Hampton Place

Tracking # -Tracking- - Main House

Condensed List

Client / PO#

Report Time

Estimator Jason E

Arch. Date

Struct. Date n/a

| Line # | Quantity | Product Description | Product Family |
|--------------------------|----------|----------------------|----------------|
| 137 | 1 | Pocket 2/4 x 6/8 | Doors |
| Windows Materials | | | |
| 138 | 1 | Window (2) 2/8 x 6/0 | Windows |
| 139 | 1 | Window (3) 2/8 x 6/0 | Windows |
| 140 | 1 | Window 2/0 x 3/2 | Windows |
| 141 | 2 | Window 2/0 x 5/0 | Windows |
| 142 | 1 | Window 2/8 x 3/0 | Windows |
| 143 | 2 | Window 2/8 x 5/0 | Windows |
| 144 | 3 | Window 3/0 x 4/0 | Windows |
| 145 | 1 | Window 3/0 x 5/0 | Windows |
| 146 | 5 | Window 3/0 x 6/0 | Windows |
| 147 | 2 | Window 3/4 x 4/2 | Windows |
| 148 | 1 | Window 4/0 x 2/0 | Windows |
| 149 | 2 | Window 1/0 x 8/0 | Windows |

Tracking # -Tracking- - Main House

Itemized List

Client / PO#

Report Time

Estimator Jason E

Arch. Date

Struct. Date n/a

| Line # | Quantity | Product Description | Product Application |
|--------------------------------|----------|----------------------------|-----------------------|
| Basement Wall Materials | | | |
| 1 | 8 | 8x8x10' | Post |
| 2 | 3 | 2x10x16' #2 | Beam |
| 3 | 2 | 2x10x8' #2 | Beam |
| 4 | 8 | 2x8x16' #2 | Beam |
| 5 | 21 | 2x8x10' #2 | Beam |
| 6 | 4 | 2x8x8' #2 | Beam |
| 7 | 2 | 2x6x14' #2 | Beam |
| 8 | 27 | 10"x16' I-Joists | Floor Joist |
| 9 | 30 | 10"x15' I-Joists | Floor Joist |
| 10 | 12 | 10"x7' I-Joists | Floor Joist |
| 11 | 17 | 2x6x18' #2 Treated | Floor Joist |
| 12 | 5 | 2x6x14' #2 Treated | Floor Joist |
| 13 | 5 | 2x6x12' #2 Treated | Floor Joist |
| 14 | 35 | 2x6x10' #2 Treated | Floor Joist |
| 15 | 1 | 12" x 300' Termite Shield | Sill Seal |
| 16 | 2 | 6" x 100' Sill Seal | Sill Seal |
| 17 | 42 | 3/4"x4'x8' OSB T&G | Floor Decking |
| 18 | 11 | 2x6x16' #2 Treated | Mud Sill |
| 19 | 6 | 1-1/4" x 10"x16' Joist Rim | Rim |
| 20 | 147 | 5/4x6x16' #2 Treated | Deck Decking |
| 21 | 3 | 2x12x18' #2 | Stair Stringer |
| 22 | 67 | 2x4x104-5/8" #2 | Interior Stud |
| 23 | 10 | 2x4x16' #2 | Interior Plate |
| 24 | 4 | 2x4x16' #2 Treated | Interior Bottom Plate |
| FF Wall Materials | | | |
| 25 | 73 | 2x6x116-5/8" #2 | Exterior Stud |
| 26 | 105 | 2x6x104-5/8" #2 | Exterior Stud |
| 27 | 36 | 2x6x16' #2 | Exterior Plate |
| 28 | 19 | 7/16"x4'x10' OSB | Exterior Sheathing |
| 29 | 27 | 7/16"x4'x9' OSB | Exterior Sheathing |
| 30 | 135 | 2x4x104-5/8" #2 | Interior Stud |
| 31 | 27 | 2x4x16' #2 | Interior Plate |
| 32 | 84 | 2x4x16' #2 | Bracing/Blocking |
| FF Beams Materials | | | |
| 33 | 15 | 8x8x10' | Post |
| 34 | 2 | 2x12x14' #2 | Header |
| 35 | 3 | 2x10x14' #2 | Header |
| 36 | 9 | 2x8x14' #2 | Header |
| 37 | 4 | 2x6x14' #2 | Header |
| 38 | 5 | 7/16"x4'x8' OSB | Header Fill |
| 39 | 4 | 1-3/4"x9-1/4"x17' LVL | Beam |
| 40 | 5 | 2x10x18' #2 | Beam |
| 41 | 3 | 2x10x16' #2 | Beam |
| 42 | 10 | 2x10x10' #2 | Beam |
| 43 | 3 | 2x10x8' #2 | Beam |
| 44 | 3 | 2x8x18' #2 | Beam |
| 45 | 4 | 2x8x16' #2 | Beam |
| 46 | 4 | 2x8x10' #2 | Beam |
| 47 | 2 | 2x6x12' #2 | Beam |
| 48 | 4 | 2x6x8' #2 | Beam |

Tracking # -Tracking- - Main House

Itemized List

Client / PO#

Report Time

Estimator Jason E

Arch. Date

Struct. Date n/a

| Line # | Quantity | Product Description | Product Application |
|-----------------------------------|----------|-----------------------------|---------------------|
| 49 | 3 | 2x12x18' #2 | Stair Stringer |
| SF Deck Materials | | | |
| 50 | 63 | 10"x15' I-Joists | Floor Joist |
| 51 | 2 | 10"x8' I-Joists | Floor Joist |
| 52 | 43 | 3/4"x4'x8' OSB T&G | Floor Decking |
| 53 | 7 | 1-1/4" x 10"x16' Joist Rim | Rim |
| 54 | 14 | 2x6x18' #2 | Ceiling Joist |
| 55 | 10 | 2x6x14' #2 | Ceiling Joist |
| 56 | 35 | 2x6x10' #2 | Ceiling Joist |
| SF Wall Materials | | | |
| 57 | 196 | 2x6x92-5/8" #2 | Exterior Stud |
| 58 | 38 | 2x6x16' #2 | Exterior Plate |
| 59 | 50 | 7/16"x4'x8' OSB | Exterior Sheathing |
| 60 | 32 | 2x6x92-5/8" #2 | Interior Stud |
| 61 | 167 | 2x4x92-5/8" #2 | Interior Stud |
| 62 | 6 | 2x6x16' #2 | Interior Plate |
| 63 | 32 | 2x4x16' #2 | Interior Plate |
| SF Beams Materials | | | |
| 64 | 3 | 6x6x10' #2 | Post |
| 65 | 3 | 2x12x14' #2 | Header |
| 66 | 8 | 2x8x14' #2 | Header |
| 67 | 8 | 2x6x14' #2 | Header |
| 68 | 3 | 7/16"x4'x8' OSB | Header Fill |
| 69 | 2 | 1-3/4"x11-1/4"x31' LVL 2.OE | Beam |
| 70 | 4 | 1-3/4"x11-1/4"x17' LVL 2.OE | Beam |
| 71 | 3 | 1-3/4"x11-1/4"x15' LVL 2.OE | Beam |
| SF Ceiling Joist Materials | | | |
| 72 | 15 | 2x6x16' #2 | Ceiling Joist |
| 73 | 11 | 2x6x14' #2 | Ceiling Joist |
| 74 | 14 | 2x6x12' #2 | Ceiling Joist |
| 75 | 33 | 2x6x10' #2 | Ceiling Joist |
| 76 | 3 | 2x6x8' #2 | Ceiling Joist |
| Roof Materials | | | |
| 77 | 1 | 2x10x18' #2 | Roof Hip & Valley |
| 78 | 4 | 2x10x16' #2 | Roof Hip & Valley |
| 79 | 1 | 2x10x12' #2 | Roof Hip & Valley |
| 80 | 1 | 2x10x10' #2 | Roof Hip & Valley |
| 81 | 2 | 2x10x8' #2 | Roof Hip & Valley |
| 82 | 1 | 2x12x24' #2 | Roof Ridge |
| 83 | 1 | 2x12x18' #2 | Roof Ridge |
| 84 | 1 | 2x12x14' #2 | Roof Ridge |
| 85 | 1 | 2x10x16' #2 | Roof Ridge |
| 86 | 2 | 2x10x14' #2 | Roof Ridge |
| 87 | 4 | 2x10x28' #2 | Rafter |
| 88 | 16 | 2x10x26' #2 | Rafter |
| 89 | 2 | 2x10x24' #2 | Rafter |
| 90 | 1 | 2x10x22' #2 | Rafter |
| 91 | 8 | 2x10x20' #2 | Rafter |
| 92 | 11 | 2x10x18' #2 | Rafter |

Tracking # -Tracking- - Main House

Itemized List

Client / PO#

Report Time

Estimator Jason E

Arch. Date

Struct. Date n/a

| Line # | Quantity | Product Description | Product Application |
|--------|----------|--------------------------|----------------------|
| 93 | 6 | 2x10x16' #2 | Rafter |
| 94 | 5 | 2x10x14' #2 | Rafter |
| 95 | 4 | 2x10x12' #2 | Rafter |
| 96 | 27 | 2x8x24' #2 | Rafter |
| 97 | 3 | 2x8x18' #2 | Rafter |
| 98 | 16 | 2x8x14' #2 | Rafter |
| 99 | 21 | 2x8x12' #2 | Rafter |
| 100 | 4 | 2x8x10' #2 | Rafter |
| 101 | 49 | 2x8x8' #2 | Rafter |
| 102 | 1 | 2x4x12' #2 | Knee Bracing |
| 103 | 26 | 2x4x8' #2 | Knee Bracing |
| 104 | 114 | 7/16"x4'x8' OSB | Roof Decking |
| 105 | 19 | Roll 30# Felt (2 sq.) | Roofing Underlayment |
| 106 | 37 | Square(s) of Shingles | Roof Shingles |
| 107 | 129 | LF of Ice/Water Membrane | Ice and Water Shield |

Exterior Trim Materials

| | | | |
|-----|-------|--|------------------------|
| 108 | 695 | 48" x 15.875" HardieShingle Staggered Edge Panel | Shingle Siding |
| 109 | 1,059 | SF of Board Siding | Board Batten Siding |
| 110 | 3 | 9'x150' House Wrap | House Wrap |
| 111 | 1 | 1x8x20' | Rake |
| 112 | 4 | 1x8x18' | Rake |
| 113 | 2 | 1x8x16' | Rake |
| 114 | 1 | 1x8x14' | Rake |
| 115 | 2 | 1x8x12' | Rake |
| 116 | 3 | 1x8x10' | Rake |
| 117 | 4 | 1x8x8' | Rake |
| 118 | 14 | 1x8x16' | Eave |
| 119 | 56 | 1x2x16' | Shingle Strip |
| 120 | 29 | 1x8x16' | Frieze Board |
| 121 | 29 | 2x4x16' #2 | Rake Soffit Framing |
| 122 | 8 | 1/2"x4'x8' CDX | 12" Rake Closed Soffit |
| 123 | 40 | 2x4x16' #2 | Eave Soffit Framing |
| 124 | 8 | 1/2"x4'x8' CDX | 12" Eave Soffit |
| 125 | 10 | 1/2"x4'x8' CDX | Porch Soffit |
| 126 | 28 | 1x12x16' Western Red Cedar | Exterior Trim |
| 127 | 15 | 1x10x16' | Exterior Trim |
| 128 | 14 | 1x8x16' Western Red Cedar | Exterior Trim |
| 129 | 61 | 1x4x16' | Exterior Trim |

Drywall Materials

| | | | |
|-----|----|--------------------|----------------------|
| 130 | 75 | 1/2"x4'x8' Gypsum | Interior Ceiling Gyp |
| 131 | 18 | 1/2"x4'x10' Gypsum | Exterior Sheathing |
| 132 | 26 | 1/2"x4'x9' Gypsum | Exterior Sheathing |
| 133 | 48 | 1/2"x4'x8' Gypsum | Exterior Sheathing |
| 134 | 95 | 1/2"x4'x9' Gypsum | Interior Sheathing |
| 135 | 93 | 1/2"x4'x8' Gypsum | Interior Sheathing |

Insulation Materials

| | | | |
|-----|-------|------------------------------------|------------------------|
| 136 | 1,236 | SF of R-30 Batt Insulation 16" Bay | Ceiling Insulation |
| 137 | 2,887 | SF of R-13 Batt Insulation 16" Bay | Wall Insulation |
| 138 | 2,689 | SF of R-21 Batt Insulation 16" Bay | Under Floor Insulation |

Tracking # -Tracking- - Main House

Itemized List

Client / PO#

Report Time

Estimator Jason E

Arch. Date

Struct. Date n/a

| Line # | Quantity | Product Description | Product Application |
|---------------------------|----------|-----------------------------------|---------------------|
| Hardware Materials | | | |
| 139 | 51 | Construction Adhesive (1 Qt.) | Adhesive |
| Doors Materials | | | |
| 140 | 1 | Exterior 2/8 x 6/8 LH Inswing | Exterior Door |
| 141 | 1 | Exterior 2/8 x 6/8 RH Inswing | Exterior Door |
| 142 | 1 | Exterior 3/0 x 6/8 LH Inswing | Exterior Door |
| 143 | 1 | Exterior French 5/4 x 8/0 Inswing | Exterior Door |
| 144 | 1 | Interior 1/6 x 6/8 RH Swing | Interior Door |
| 145 | 1 | Interior 2/0 x 6/8 LH Swing | Interior Door |
| 146 | 1 | Interior 2/0 x 6/8 RH Swing | Interior Door |
| 147 | 3 | Interior 2/4 x 6/8 RH Swing | Interior Door |
| 148 | 4 | Interior 2/8 x 6/8 LH Swing | Interior Door |
| 149 | 3 | Interior 2/8 x 6/8 RH Swing | Interior Door |
| 150 | 3 | Interior 3/0 x 6/8 LH Swing | Interior Door |
| 151 | 2 | Interior 3/0 x 6/8 RH Swing | Interior Door |
| 152 | 1 | Pocket 2/4 x 6/8 | Interior Door |
| Windows Materials | | | |
| 153 | 1 | Window (2) 2/8 x 6/0 | Window |
| 154 | 1 | Window (3) 2/8 x 6/0 | Window |
| 155 | 1 | Window 2/0 x 3/2 | Window |
| 156 | 2 | Window 2/0 x 5/0 | Window |
| 157 | 1 | Window 2/8 x 3/0 | Window |
| 158 | 2 | Window 2/8 x 5/0 | Window |
| 159 | 3 | Window 3/0 x 4/0 | Window |
| 160 | 1 | Window 3/0 x 5/0 | Window |
| 161 | 5 | Window 3/0 x 6/0 | Window |
| 162 | 2 | Window 3/4 x 4/2 | Window |
| 163 | 1 | Window 4/0 x 2/0 | Window |
| 164 | 2 | Window 1/0 x 8/0 | Window |